



SM580

Build Guide

SLIGER
PC CASES. MADE IN THE USA.

SCREWS

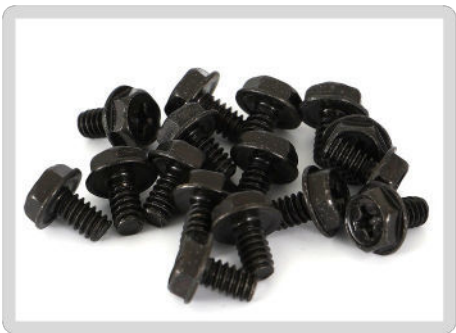
The SM580 comes with a total of 4 different screws. For the purposes of this guide we will assign a unique color to each screw to signify their locations in this guide.



GREEN M3 x 6mm PAN HEAD
Securing PCIe Cards



RED M3 x 5mm FLAT HEAD
Chassis Top Assembly
Rear AC Inlet
SSDs (on SSD bracket)
SFX PSU Mount Bracket



VIOLET 6-32 x 1/4" HEX HEAD
Motherboard
Power Supplies
Radiator

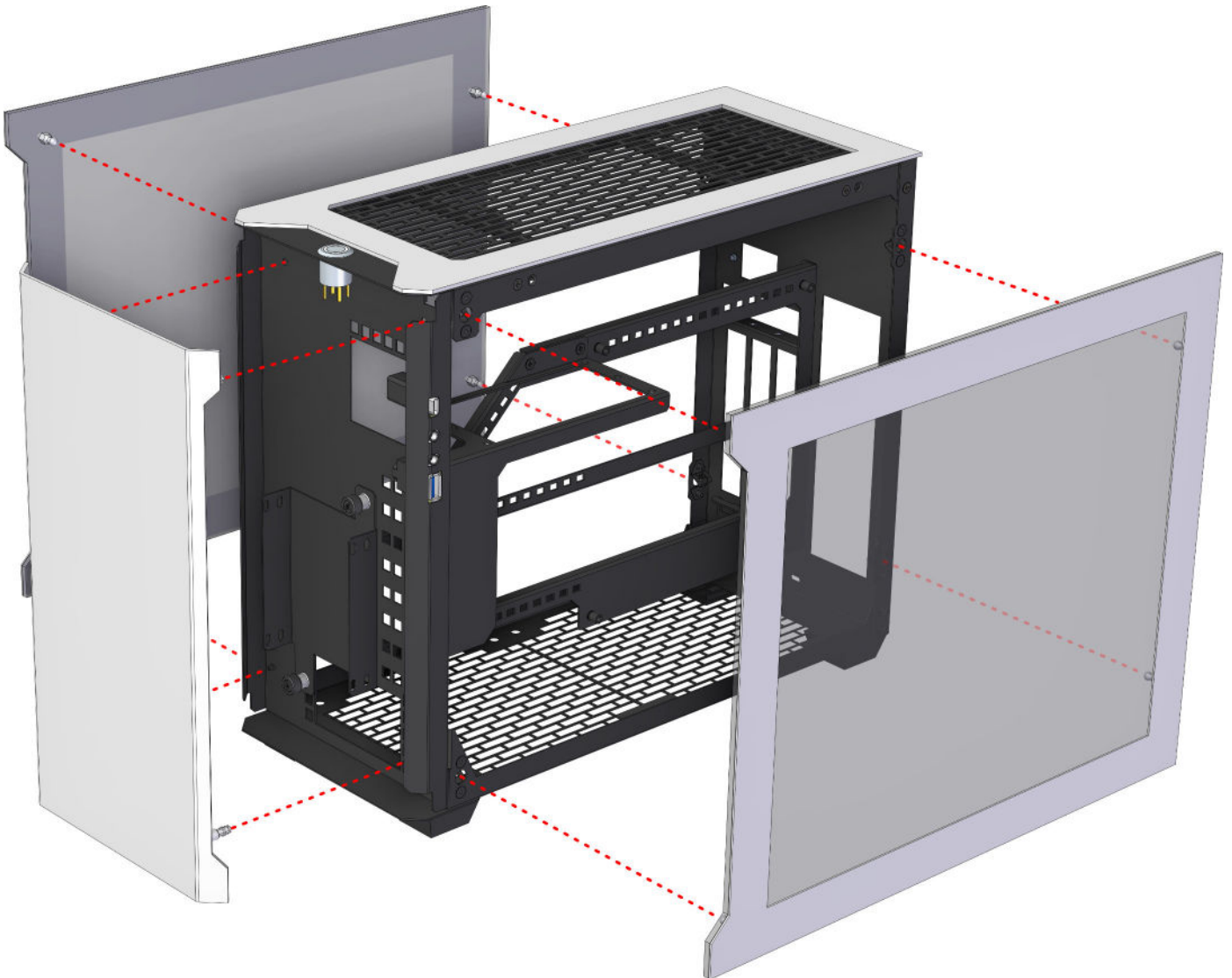


PINK M3 x 8mm FLAT HEAD
Power pig tail

EASY-OFF PANELS

The front and side panels all have tool-less removal via their ball-stud mounting points. Careful, panels may be very tight on the first few times on/off.

CAUTION: The Top Panel is attached with screws, see next page.



RE-ASSEMBLY NOTES

Side panels are reversible to either side.

Front Panel can be installed with either end at top or bottom.

THE TOP PANEL



The top panel on the SM580 is held on via **6x M3 x 5mm FLAT HEAD** screws.

Two are located by the power switch in the front.

Two are located on the rear top edge of the case.

Lastly, two are located on the top rear corners of each side of the case.



REASSEMBLY NOTE: When putting the top panel back on the case it is recommended to position the tabs on the rear corners first, then place the rear flange onto the outside of the frame. This will position the front flange correctly.

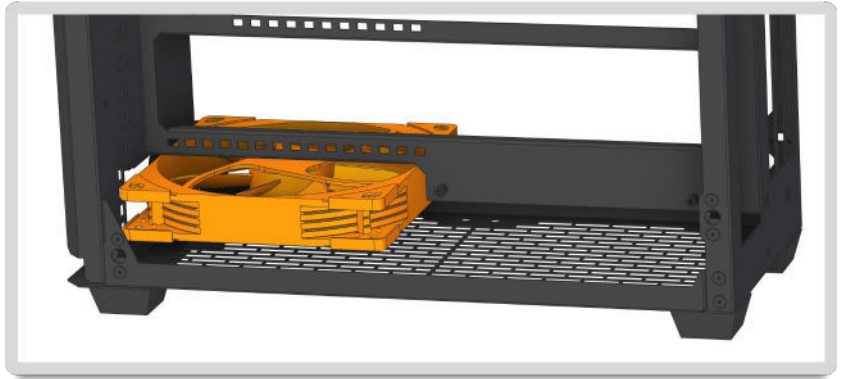
BOTTOM FANS

IT IS RECOMMENDED TO INSTALL BOTTOM FANS FIRST.

You may run into troubles getting them into the case if you install the PSU, motherboard, or GPU before the fans.

STEP 1

Slide first fan into the case at the bottom front. Be sure to double check your fan blade direction matches your desired airflow direction!



NOTE: We recommend setting bottom fans to INTAKE and top fans to EXHAUST.

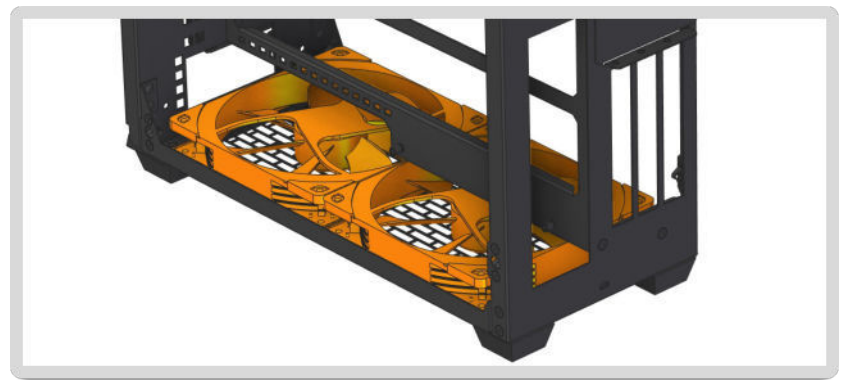
STEP 2

Slide first fan to the back of the case.



STEP 3

Install second fan into the front bottom of the case.



Fan mounting screws are not included.

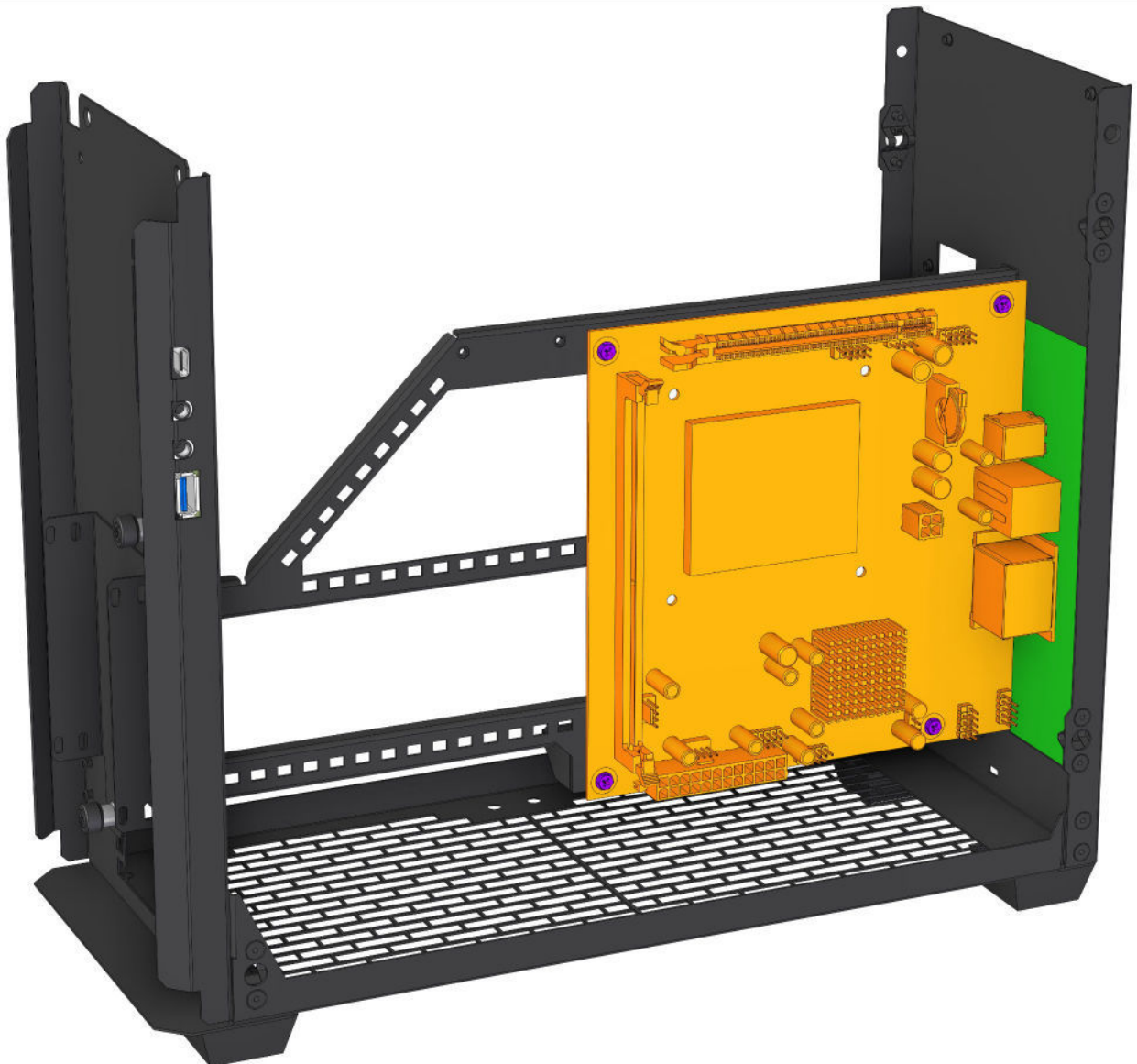
Countersunk holes are for KB5 head screws. Purchasing new screws can be done on Amazon or NewEgg.

MOTHERBOARD

Be sure to install your **IO shield** first!

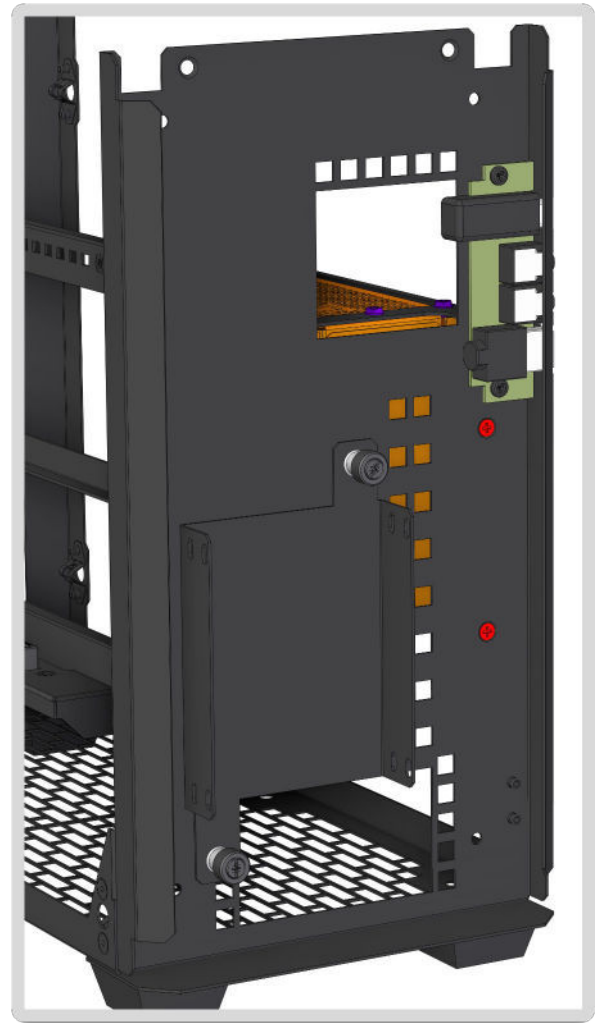
Some CPU coolers and AIOs may require a back plate to be installed before installing the motherboard into the case. It is advised to check that any M.2 drives on the back of the motherboard are installed before mounting the motherboard. Once the **IO shield** is properly installed the motherboard can now be mounted using **4x 6-32 x 1/4" HEX HEAD** screws.

A Phillips #2 screw driver with a minimum 3" shaft length is recommended for installing these screws.



POWER SUPPLY

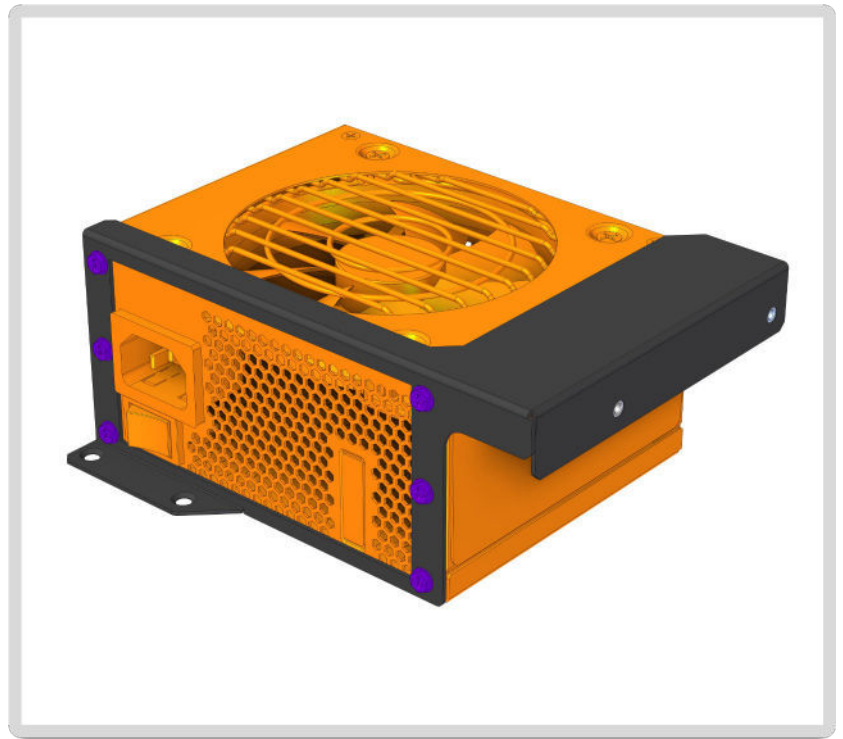
The SFX PSU mounting bracket is secured to the case spine via **2x M3 x 5mm FLAT HEAD** screws. These screws are located at the top middle of the spine, next to the motherboard corner standoff. There are also **2x M3 x 5mm FLAT HEAD** screw locations behind the front panel of the case.



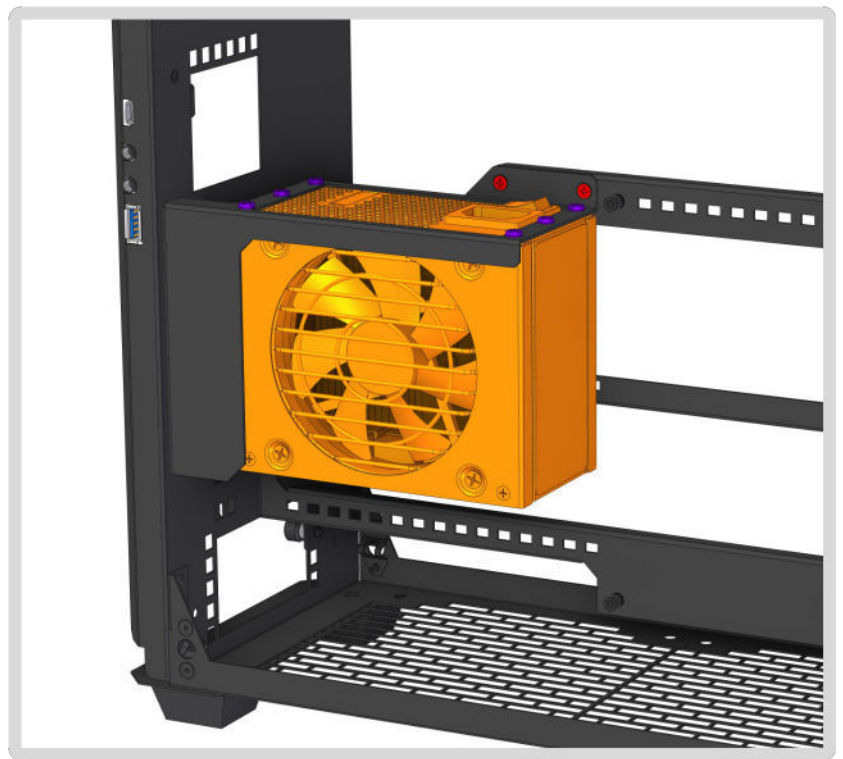
POWER SUPPLY CONT.

The SFX PSU can be attached to the PSU Mounting Bracket with the included **6x M3x5mm HEX HEAD** screws.

Note: Not all SFX Power Supplies have all 6x holes. It is recommended to attach your power supply's modular cables first, and loosely route them.

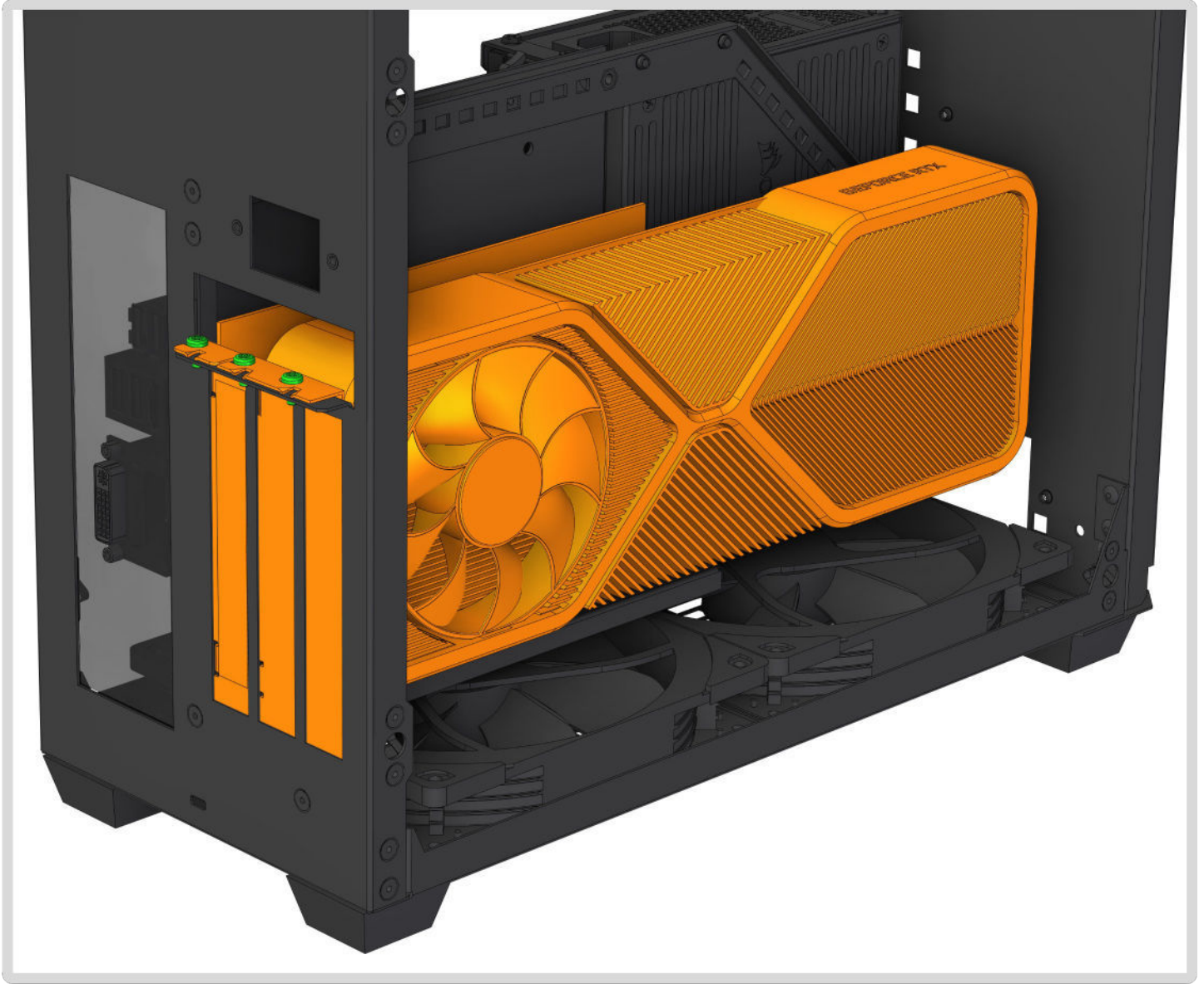


Once the SFX PSU is attached to its mounting bracket and the cables are routed into position, the SFX PSU can be screwed back in via the **4x M3x5mm FLAT HEAD** screws removed in the last step.



PCIe CARDS

All GPU and other PCIe cards (if using bifurcated / trifurcated riser) should now be installed into the case. The PCIe cards are mounted
3x M3 x 6mm PAN HEAD screws.



Power Cords

STANDARD MOUNT

The power cord should be installed by pulling it in from the rear through the power cord mount hole, passing through the cable mounting bracket. The inlet and metal plate are then mounted via **2x M3x5mm FLAT HEAD** screws as shown.



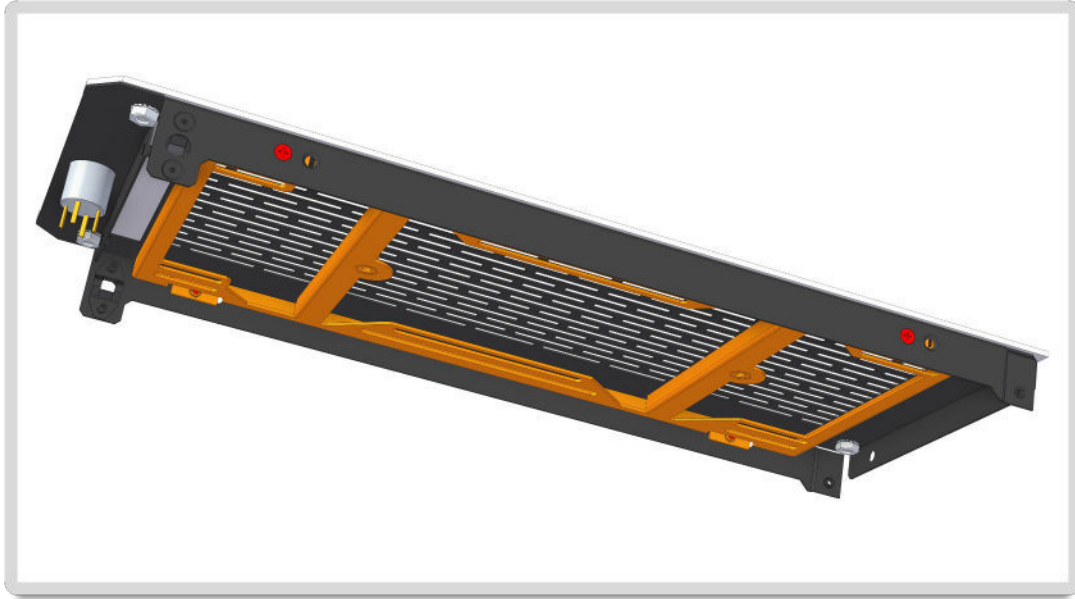
PIGTAIL MOUNT

The cord should be installed by pulling it in from the rear through the power cord mount hole. With the cable partially out of the case the cable grommet should be clipped on to the power cord, and then clipped into the metal plate. The metal plate can then be mounted via **2x M3x5mm FLAT HEAD** screws.



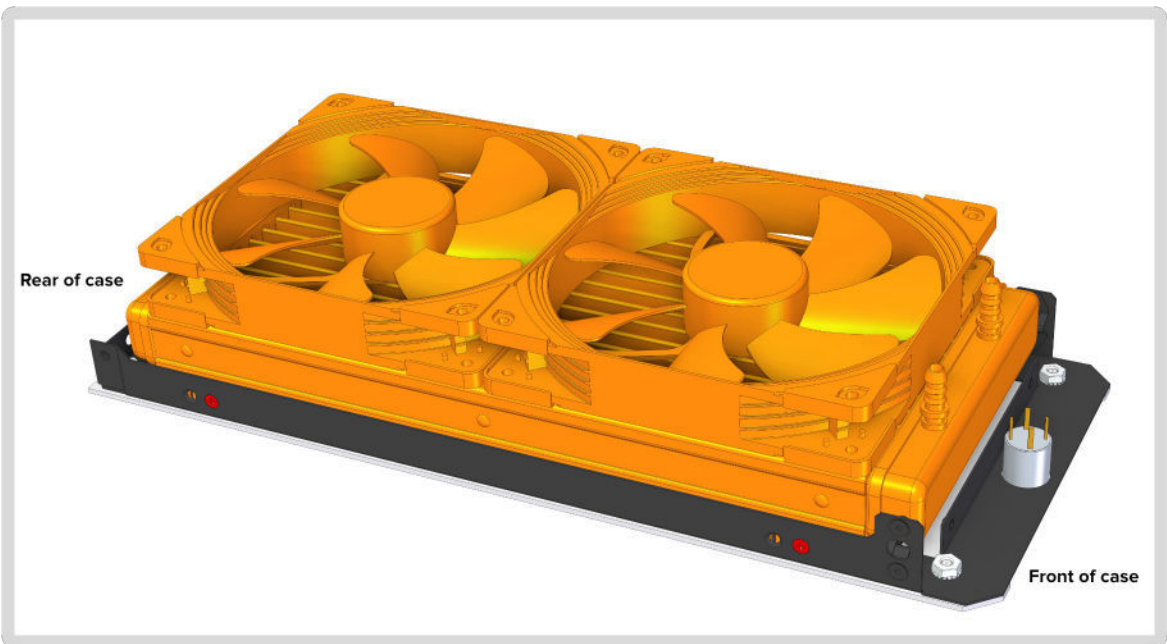
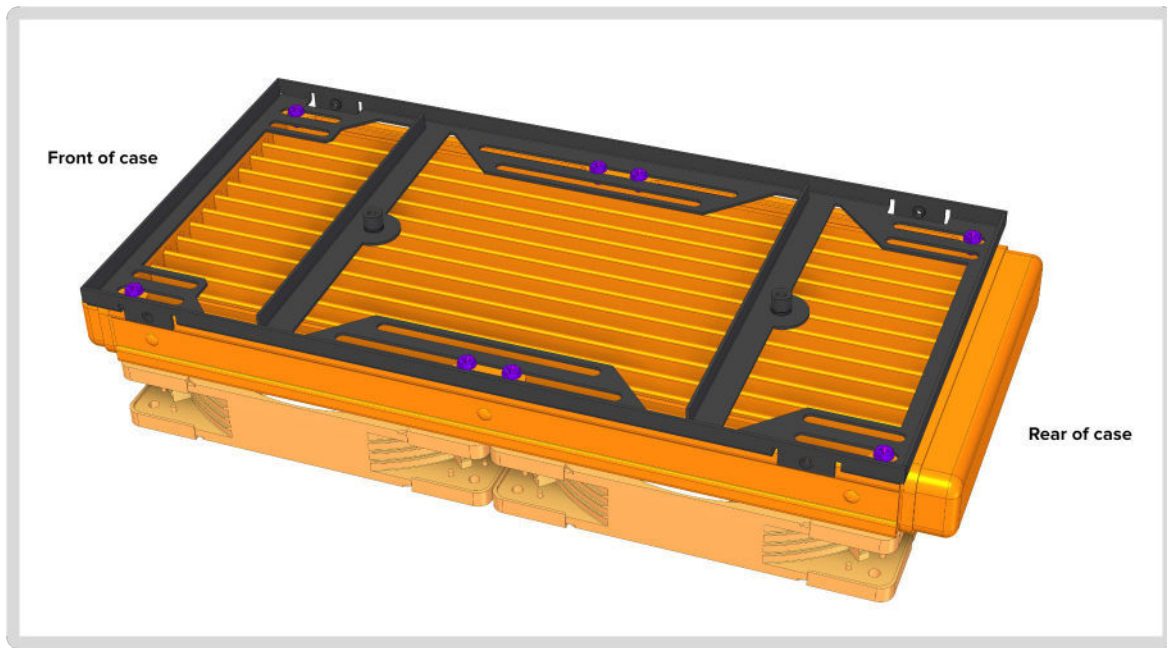
SUBTOP REMOVAL / AIO INSTALL

The AIO / handle bracket is attached to the subtop with **4x M3 x 5mm FLAT HEAD** screws. Remove screws and pull the AIO bracket out.



ATTACHING RADIATOR

The SM580 AIO Bracket can fit either a 240mm or 280mm radiator. Attach the radiator with the hose ports near the front of the case with up to **8x 6-32 x 1/4" HEX HEAD** screws. Then mount either your 120mm or 140mm radiator fans.



AIO INSTALL CONT.

Make sure the front flange is on the inside of chassis. The top assembly attaches to the chassis with **2x M3 x 5mm FLAT HEAD** screws.

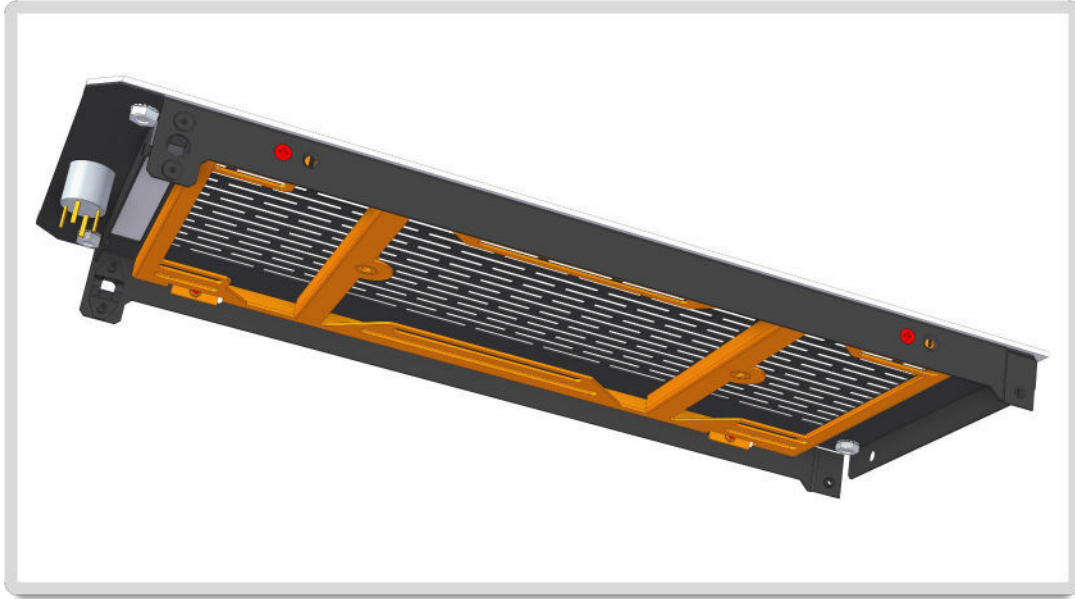


Make sure rear flange is on the outside of the rear chassis. There are **4x M3 x 5mm FLAT HEAD** screws.



SUBTOP REMOVAL / AIO INSTALL

The AIO bracket is attached to the subtop with **4x M3 x 5mm FLAT HEAD** screws. Remove screws and pull the AIO bracket out.



CABLE MANAGEMENT

Tidy up all cables with zip ties or velco cable wraps to improve airflow and keep cables off fan blades, away from components.

Route AIO water lines (Blue) behind the PSU (Yellow) Mount Bracket.



AIO INSTALL CONT.

Make sure the front flange is on the inside of chassis. The top assembly attaches to the chassis with **2x M3 x 5mm FLAT HEAD** screws.



Make sure rear flange is on the outside of the rear chassis. There are **4x M3 x 5mm FLAT HEAD** screws.



SSD MOUNTING

The SM580 has a SSD mounting bracket located behind the front panel. Each SSD attaches to the bracket with **4x M3 x 6mm PAN HEAD** screws. Be sure to install drives with the SATA power and data connections face down.

