

SLIGER GD RACK SLIDE INSTALLATION

INSTALL GUIDE V1.0

KIT PARTS



M4 PAN HEAD

Attaches rear support to outer slide
Attaches inner slide to chassis



M4 KEP NUT

Use with above M4 PAN HEAD
for attaching rear support bracket



M-4 LONG SCREW

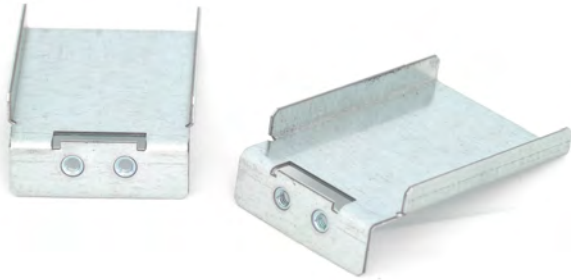
Use with Rack Post Dimples to
attach front and rear brackets



RACK POST DIMPLES

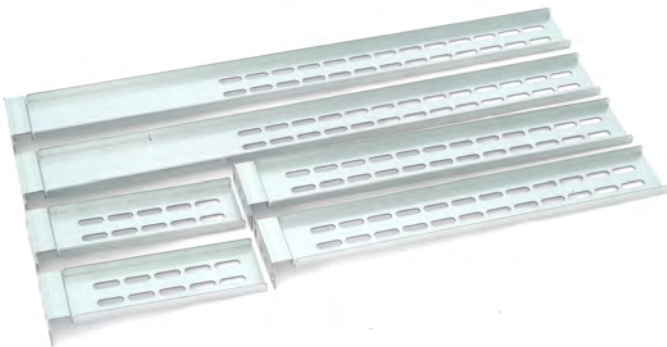
Pair with above M-4 Long Screws
to secure front and rear extensions
to the rack posts

PARTS CONT.



FRONT SUPPORT BRACKETS

Attaches rail slides to front rack post
Use with **M-4 Long Screws** and **Rack Post Dimples** 2x per kit



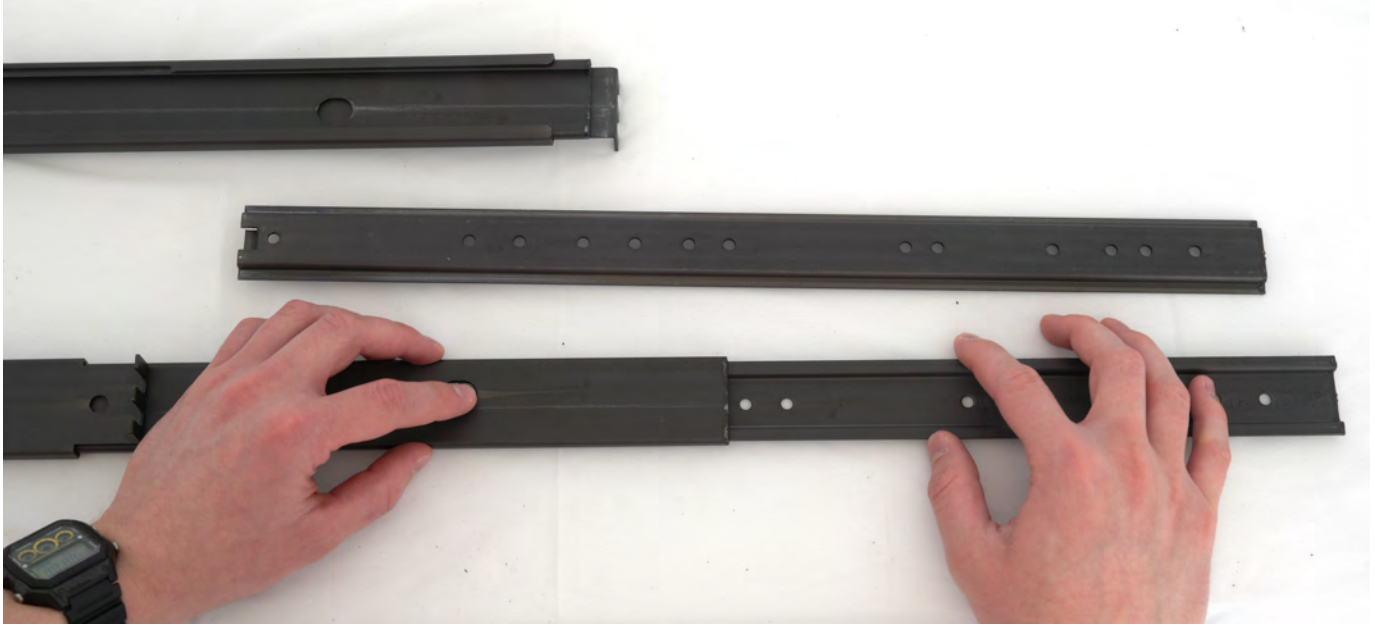
REAR SUPPORTS

Attaches rack slides to rear post
Use with **M-4 Long Screws** and **Rack Post Dimples**



Rack Rail SLIDES Use with
front and rear supports 2x per
kit

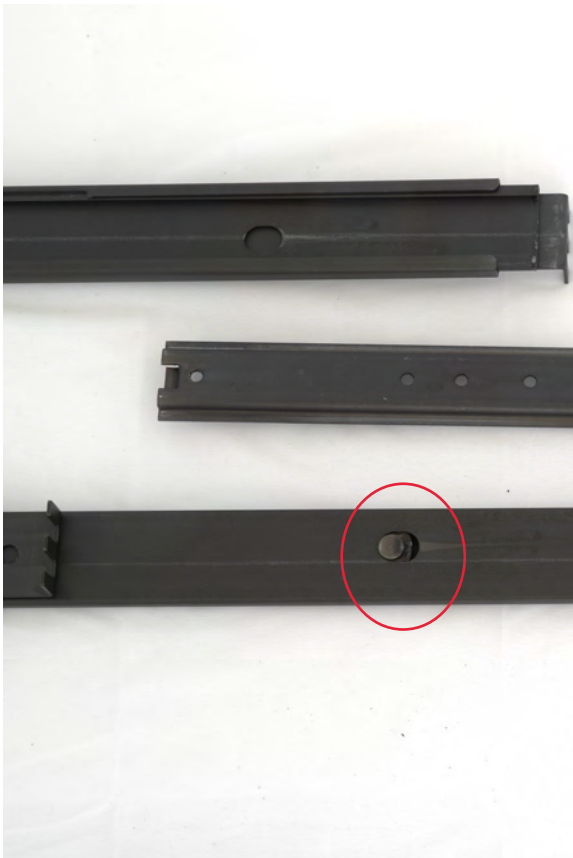
INNER MEMBER



REMOVE INNER MEMBER

by depressing the release button, pictured at left, and sliding the inner member completely out of the slide assembly as pictured at top.

This inner member must be removed from both slides before any installation work can be done.



CASE SIDES



ATTACH INNER MEMBER TO SIDES OF CASE

Starting from the front most screw hole, attach the inner member to the side of your case using **M4 PAN HEAD** screws from the 2nd page of this guide.

DO NOT USE THE M-4 LONG SCREWS

Repeat this on both sides of the case. The number of M4 screws required will vary between CX models; 3 to 5 screws per side.

SLIDE ASSEMBLY



Now, with the inner member attached to the case, the parts you have left should look like the above. (Lengths of slides may differ based on the rail kit length you purchased.)

RACK ATTACHMENT



Install the Rack Post Dimples as pictured, with screw pass-through holes centered in the rack post hole

NOTE: The Dimple may not be entirely flush against the rack.

Dimples need to be installed on both sides at the front and the back



Hold 1x Front Support Bracket against the front prongs of the rail slide outer member, as shown on the left. Make sure the bracket is flush against both the outer member and the front prongs.

Then hold the outside of the prongs against the back of the rack post and install the first M-4 Long Screw. The prongs should be sandwiched between the rack post and Front Support Bracket.



Install the second screw. Make sure the outer member didn't slide during install. If so, loosen screws and readjust.

The rail assembly should be cantilevered by just these front screws.

Repeat for opposite side.

Next we will install the rear supports!



INSTALL REAR SUPPORT

Position the rear support against the inside of the rack post behind the Rack Post Dimples.

Install both **M-4** Long Screws.



Rear extension should match image on left when completed.



NOTE: the other end of the rear extension should sit on the outside of the rail outer member.

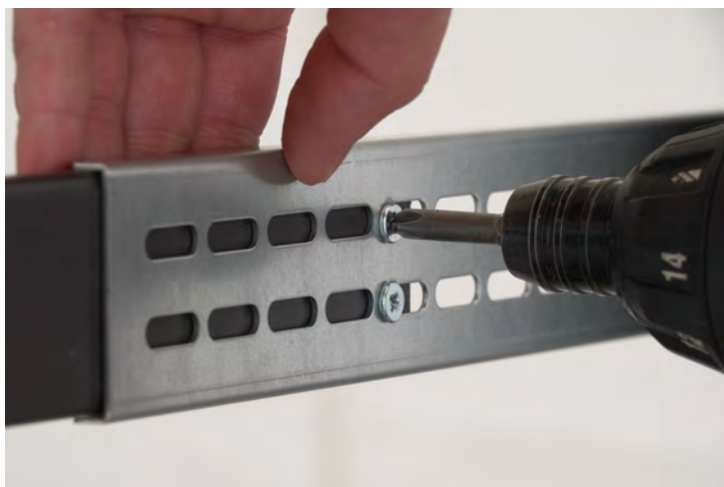
Continued...



Pinch the Rear Extension Bracket and rail outer member together. Feed 1x M-4 Pan Head screw through the obround hole and the hole in the outer member.

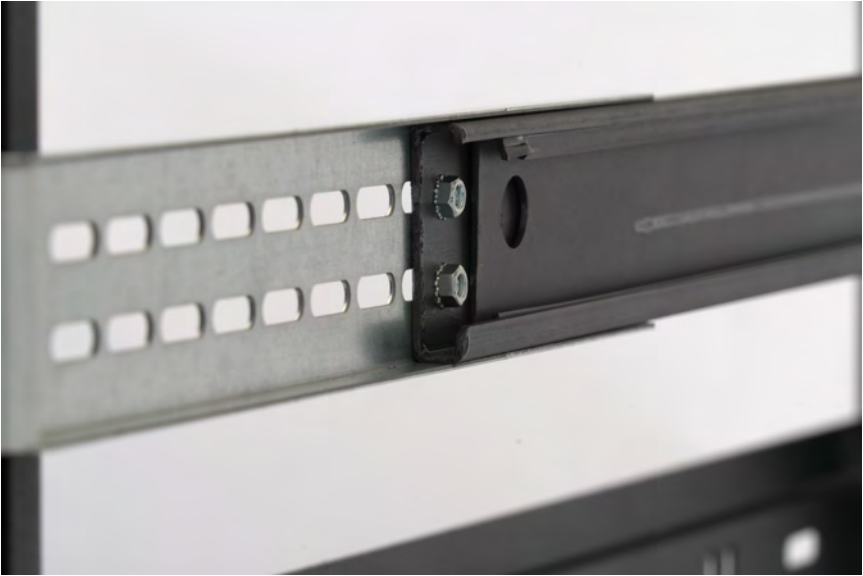
Screw can be fed from either the inside or outside.

On the opposite side, attach one of the included Kep Nuts. Hand tighten and repeat the previous step with the second hole on the outer member.



Tighten both screws with screwdriver and repeat on the opposite side.

Once completed, the rear support bracket and rail outer member should look similar to the ones pictured on this page.



INSTALL TIME



Once both rack slide assemblies are successfully installed into your rack cabinet, it is time to slide your CX rack chassis into position.

Slide the inner part of the rail outer members forward until you hear a loud click and the inner part stops moving. The release button should be engaged as pictured above. When complete, the outer members should match the image below.





Insert the the inner slides into the extended outer members. You will need to depress the security latches on the outer member as you do so. Push the chassis until you hear the security latches engage, pictured below.



NOTE: It may take more than one attempt to get the chassis to line up with both slides. The chassis should slide with some friction once properly installed in the slides.



Once the inner slides are successfully centered and slide into the middle members, you will need to press down the security latches to finish sliding the chassis into your rack cabinet. The second set of security latches will disengage automatically as you slide the chassis all the way in.